

# Snow Cover Variations in Eastern Turkey as Observed from NOAA AVHRR

Erturk, A.<sup>1</sup>; Romanov, P.<sup>2</sup>

<sup>1</sup>Turkish State Meteorological Division, TURKEY;

<sup>2</sup>NOAA/NESDIS Office of Satellite Applications and Research, UNITED STATES



# SNOW COVER VARIATIONS IN EASTERN TURKEY AS OBSERVED FROM NOAA AVHRR

Aydın Gürol ERTÜRK – Turkish State Meteorological Service  
Peter Romanov – NOAA/NESDIS



Turkish State  
Meteorological  
Service

ESA Cold Region Hydrology Workshop, 28-30 April 2010, Innsbruck



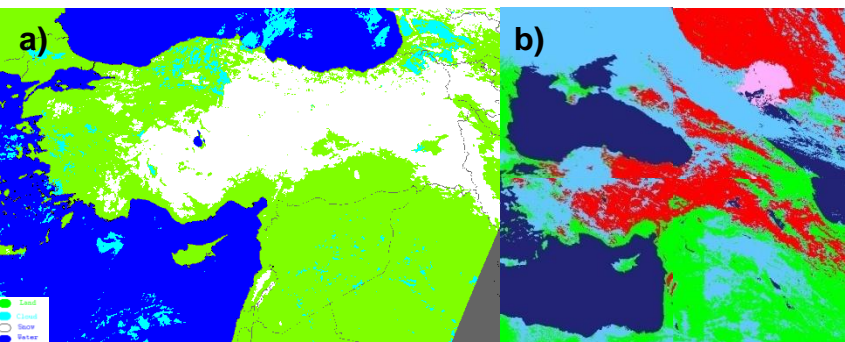


Figure 1: a) Daily Snow Recognition product derived from NOAA AVHRR and b) MODIS Daily Snow Cover map (MOD10A1.5) date 22 February 2008.

Validation & Hydrological Impact

Validation Results	
POD %	80.36
FAR %	30.91
HR %	87.44
CSI %	59.13

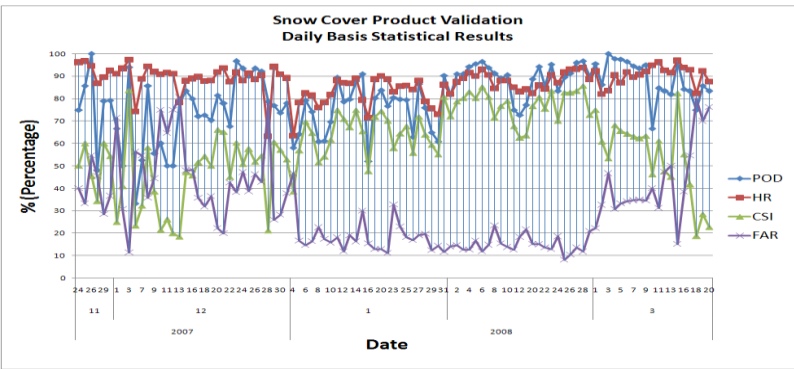


Figure 3: a) MSG RGB321 image and b) NOAA AVHRR RGB134 image date 22 February 2008.

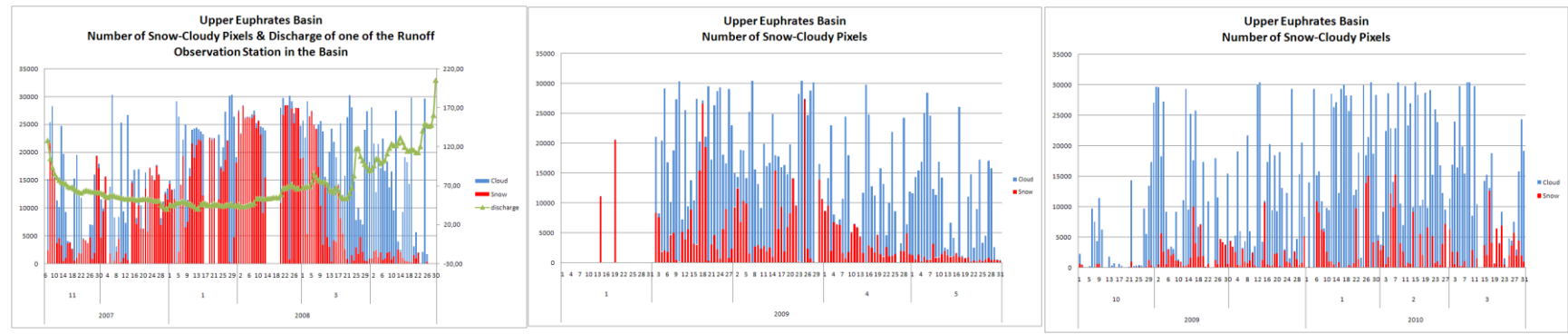


Figure 4: a) Snow cover variation and runoff measurement relationship over Upper Euphrates Basin for water year 2007-2008 b) snow cover variation of 2008-2009, c) snow cover variation of 2009-2010.